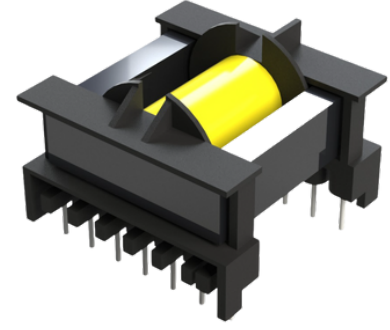


PRODUCT DATASHEET

Product Type : SMPS Transformer
Model : ETD29
Bobbin Type : ETD2901-H
Ferrite Core Type : ETD2920



The ETD29 SMPS transformer offers high efficiency and compact size for power ranges 20W - 40W. Ideal for LED drivers, adapters, and general-purpose industrial power supplies operating at high frequencies.

1. Core Parameters

Effective Length (L_e)	71.4	mm
Effective Area (A_e)	76.7	mm ²
Effective Volume (V_e)	5478.1	mm ³

2. Electrical Characteristics

Inductance Factor	3000±25% nH/N ²	1KHZ/0.3V/25 °C
Inductance	300±25% uH	1KHZ/0.3V/10Ts/25 °C
Power Loss	550 mW/cm ³	100KHZ/200mT/100 °C

3. Material Characteristics

Initial Permeability	-	2400±25%
Saturation Magnetic Flux Density	25 °C 100 °C	510 mT 390 mT
Remanent Flux Density	25 °C 100 °C	110 mT 60 mT
Coercive Force	25 °C 100 °C	13 A/m 6.5 A/m

4. Technical Drawing

